

# XENIUS

## YOUR ACCURACY ASSET

### 1 - SCHEDULING

#### WORK PLANNING

- From the terminal via the « Treatment » menu



XENIUS Menu

- From the PC: if the AGRO System Desktop Application license is active. The AGRO System Desktop Application also allows the identification of the spraying session (customer, operator, crop) for an optimal tracking.



Work Screen

#### ASSETS

- Avoids mistakes
- Minimizes the risk of improper handling of a user

### 2 - WORK AT THE PLOT

#### GUIDANCE

Integrated to the spraying



Autonomous (tool mode)



#### ASSETS

- Facilitates turning manoeuvres, particularly in poor visibility or at night

#### GPS AUTOMATIC VARIABLE RATE

Variable rates can be applied within the same plot according to the recommendation maps, which the Xenius can read directly.

Precise Manual synchronisation with the variable rate map

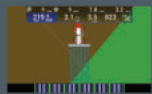


Before synchronisation



After synchronisation

Visualization of the preconized areas while spraying



#### ASSETS

- Open your variable rate maps using the AGROSystem Desktop Application and synchronizes them with your Xenius using a USB stick
- Compatible with Shape format (.shp)

#### GPS AUTO SWITCHING BOOM

The automatic boom switch off requires either a prior survey of the plots or a manual first pass and record the sprayed boundary.

3 operating modes



Manual mode

Boundary mode

#### ASSETS

- Auto-switch off at half-row
- Optimization of the plot tips
- Boundary recording
- Operates with localized intakes map (Shape format)
- Automatic nozzle switch off by external detection



Automatic mode

#### AUTOMATIC PLOT RECOGNITION

Once the plots have been geo-located, the Xenius suggests the nearest plots. The user simply has to select the first one in the list.

Plot geo-location



Plot recognition



#### ASSETS

- Allows an easier tracking with no risk of mistaking the plot
- The association of the geographical coordinates of the plots can be done directly on the vineyard

#### LOCALIZED INTAKES

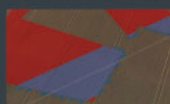
With localized intakes, an area can be sprayed regarding to the exact section width. This allows to only spray specific areas or to avoid crossing paths.

Localized intakes visualization



While spraying

Jobs done visualization



After Google Earth® exportation

#### ASSETS

- Using the auto switch off boom, this feature allows you to spray at the exact section width
- Compatible with the shape format (.shp)

### 3 - TRACABILITY

#### JOBS DONE MANAGEMENT

- AGRO System Desktop Application



Google Earth® Exportation

#### ASSETS

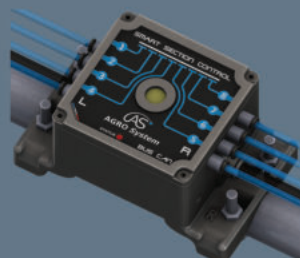
This software allows to:

- Visualise, replay, search, print, export jobs done on the Xenius
- Export your jobs on Google Earth®
- Compare your variable rate map with the real dose spread on the field
- Export to your own software job data at the iso xml format
- Manage your Xenius configurations

#### SSC Nozzle switch (Smart Section Control)

NEW

The OPTIMA SSC nozzle switch option is available in pneumatic or electric technology. The installation is simplified by a 100% automatic calibration and indexing of the modules (Patented System). The SSC module is equipped with B outputs, with defect detection.



#### ASSETS

- Accurate processing
- Instant opening / closing
- Up to 4 independently piloted spraying heights

The system integrates the detection of clogged nozzles, and a work light output.

## MULTIFUNCTION EASYJOY 2 Joystick - dedicated to vineyards

The new OPTIMA EasyJoy 2 Joystick has been designed specifically for the vineyard.



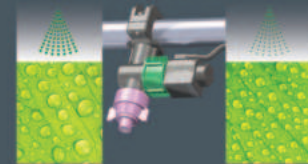
### ASSETS

- Control of the sections and all hydraulic functions
- Can be easily installed aside the hydrostatic drive handle

### SRP (Smart Regulated Pressure)

The SRP option uses the PWM (Pulse Width Modulation) technology to:

- Maintain optimal pressure at any flow rate
- Increase drop size while reducing the rate
- Reduce drift
- Manage drop sizes
- Reduce the risk of nozzle clogging



### ABC (Automatic Boom Control)

The ABC option pilots the boom, height and/or re-centering in the row using intelligent BusCAN sensors.

The system manages different boom configurations (main boom, weed control...).

### ASSETS

- Automatic ground tracking
- Automatic recentering in the row
- Automatic calibration



### NEW

The SRP option uses the PWM principle to maintain the optimum pressure on any flow control system.

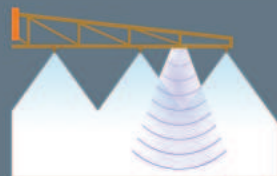
This option offers the advantage of using high flow nozzles, working at higher pressure, while spreading only the right amount.

This avoids clogging and generates larger drop sizes.

This option offers the advantage of working over a wider temperature range and with less favorable humidity conditions.

### ASSETS

- The OPTIMA electric nozzle, specifically designed for vineyards usage, reduces the risk of deposits and nozzle clogging. It guarantees an efficient treatment while reducing the rate.



Boom height diagram

## Technical specifications XENIUS VITI

- 11.7" High resolution color touch screen, with cartoon menu, easy to use
- Simultaneous display of:
  - Real L/M/A programmed L/M/A, tank level, speed, number of satellites...
  - Tank and pump speeds, flow and autonomy
  - Status of boom sections (selected/covered/harvesting)
  - Real and theoretical pressure

- Info window showing:
  - Instant flow rate - volume sprayed
  - Tank level - treated area
  - Autonomy - efficiency
  - Distance covered - GPS accuracy indicator
  - Overview of current spraying configuration
  - List of notifications
  - Recovery rate of recovery tanks

- Sequential disconnection of systems, up to 20
- Direct access for controlling:
  - Work lights\*
  - Filling stop valve\*
  - Recovery tanks\*\*

- Flow sensor and/or pressure sensor regulation
- Variable rate during labour
- Regulation to minimum pressure
- Rapid prepositioning of the regulation valve during start-up
- Alarms: Min/Max flow, Min/Max pressure, tank level, GPS signal quality, minimum supply voltage, clogged nozzle
- Partial and total volume, surface area and distance counters
- Up to 200 spots can be stored in memory
- Automatic plot recognition
- Theoretical management of tasks with alarm
- Tank management - filling stops automatically and alarm
- 16 programmable booms
- 16 pre-programmed nozzles, which can be programmed with Min/Max pressure management
- Management of N2, N3, N9, S2, S3, CC-circulations
- Automatic calibration - wheel, flow meter, pressure sensor, options

- Diagnostic menu, accessible at any time
- Configurable treatment menu (up to 16 available)
- USB interface for easy updates
- Robust and compact aluminium housing (233 x 183 x 37 mm, sealed IP65)
- Contrast setting, key beep and multiple languages

- Treatments management software, precise and flexible farming\*\*\*
- Built-in guidance bar
- Europe 2 vineyard multifunction joystick
- Galileo or Galileo module GPS info and/or GPS speed sensor
- Automatic switch On/Off sections by GPS\*\*
- Automatic GPS variable rate compatible with shape files\*\*
- Automatic GPS localized intakes compatible with shape files\*\*
- Drooler / tracking rate
- Automatic driving Easy-Cruise
- Automatic boom control, using smart BusCAN sensors
- Tank electronic gauge
- S2C module for noise tracking or multi-nozzle control
- Row height control (from 2 to 4 nozzles/row)
- Automatic usable tank transfer management
- Undriving and row positioning automatic management
- Panel spacing automatic management
- Clogged nozzles detection by divergent
- Entry for external camera

- OPTION
- OPTION
- OPTION
- OPTION
- OPTION
- OPTION
- OPTION
- OPTION
- OPTION
- OPTION
- OPTION
- OPTION
- OPTION
- OPTION
- OPTION
- OPTION

XENIUS uses CAN Bus Technology with 8-5 wire cable between the tractor and machine.  
 Power supply 12-16 Volts

Supplied with:  
 - AGSD partition box  
 - CAN Bus Cable  
 - Filing bracket  
 - User manual



Check the electronic connector (New USB-Centurus or equivalents)



French conception and manufacture  
 100% French production

© OPTIMA Concept - www.agrosystem.fr



OPTIMA Concept - AGRO System  
 ZI Les Hallots 62620 ROUTE - FRANCE  
 Tél : +33 (0)391.801.701 - Fax: +33 (0)391.801.702  
 Email : info@agrosystem.fr - Website : http://www.agrosystem.fr

## In touch with new yield records



# XENIUS VITI

Multifunctional Regulation

- Easy identification in the row
- Tracking at the plot level
- Variable rate and localized intakes
- GPS auto-switch boom



Your distributor: